



Summer 2022

Re-Think . Re-Live

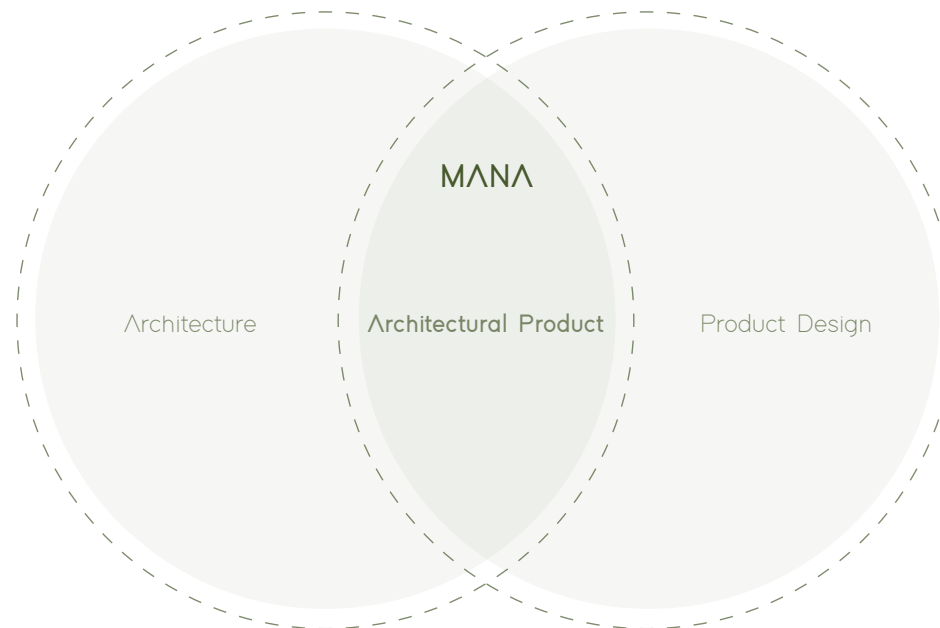
Table of Content

About MANA	Page 3
MANA Characteristics	Page 4
MANA Products	Page 5
MANA Gheslaghs	Page 6
Villa Kooch	Page 7
Villa Daal	Page 14
Pooch	Page 21
Contact info	Page 25

About MANA

Mana is a start-up company consisting of a design and executive team which officially started its professional activity with the support and investment of the 8&7 Diba Innovation Studio in the winter of 2022 based in Tehran-Iran. Mana's field of activity is focused on prefabricated architectural products along with design, research and construction in this field. The issue of prefabrication has attracted the attention and focus of many engineers, architects and companies in developed countries due to prominent and important features such as cost reduction and reduced construction time. Today's world is witnessing instantiations of successful and admirable structures based on this technology and construction method.

The obvious advantages and importance of this field of architectural technology led the Mana team to acquire their specialized knowledge and skills in order to overcome design challenges, implementation complexities, engineering standards and focus on achievement of unique quality. Mana's current activities can be evaluated in the field of academic research by focusing on prefabricated structures and recycled materials, designing specialized and studied samples for mass production, overcoming engineering and executive challenges and issues, and striving to achieve a level of standard and international quality in this field.



MANA Characteristics

One of the most important characteristics of MANA as a leading group in the field of prefabricated architectural products is originality and novelty in design and overall structure. Mana Group, by using young and leading engineers and specialists in various fields and relying on current knowledge of design and architecture, has succeeded in forming a professional and unique group and at the same time a standard structure. Therefore, different, flexible and standard products are the result of design and cooperation of experts in this structure.

^ Noteworthy feature of Mana is the importance and defined position of the employer and the customer, as well as the design of the optimal route from the moment of order to product delivery and after-sales service (repair, reconstruction, inspection, maintenance, etc.). In this regard, the user experience plays a central role and based on this, the path of designing and presenting products is formed with the participation and coordination of the user.

Among the mentioned features, adherence and firm belief in "standardization" in the field of architecture and the subject of prefabrication is one of the fundamental features of MANA. Due to the lack of relevant structures and infrastructures, this becomes a vital and critical issue in the architectural discipline. In this way, Mana Group defines the design and presentation of standard architectural products among its main and key features.



Sustainability & Energy



Prefabricated Process



Time Optimization



Standard & Quality



Expandability



Economic Optimization



Customer Service

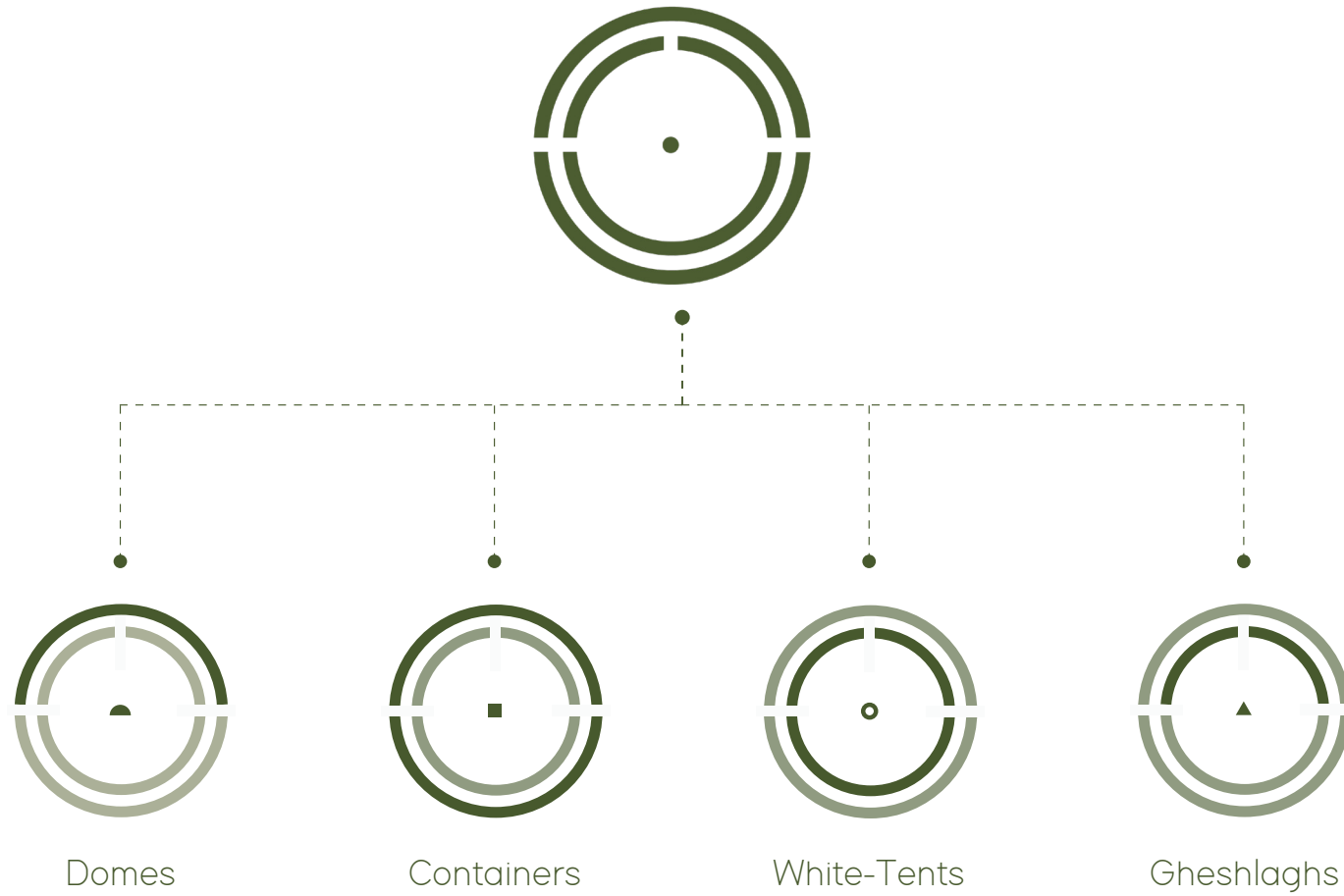


Mobility

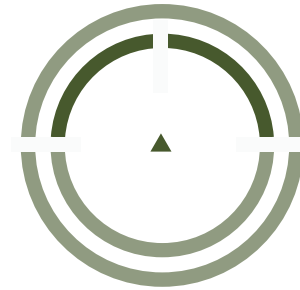


Engineering Collection

Structure of MANA Products



MANA



Geshlaghs

Mana products are defined in four general categories: Containers, Geshlaghs, White tents and Domes. Mana Geshlaghs include architectural products designed for the production of prefabricated and pre-engineered units with the multiuse ability, which are categorized in three morphologies:

Sloped Roof Units

Flat Roof Units

Accessory Units

The categorization of the mentioned programs is based on different sustainable solutions and local architecture in different climates. The content of the existing brochure is the introduction of the residential units with sloped roofs in rainy and mountainous climates, which were designed and engineered by Mana Group.

Villa Kooch

Villa Kooch has been designed to producing a modular habitat with the ability of gradual expansion by adding similar units. In these units, all the elements of the building will be produced in prefabricated form and will be assembled in the determined location. The parts will be manufactured and pre-assembled in the factory and then transported to the final site. Based on this approach, Mana has been able to dramatically reduce the construction time and costs while achieving the highest construction quality. The low weight of the structure and the possibility of transporting and installing parts have made these units suitable for lands with critical soil conditions and uneven access routes.



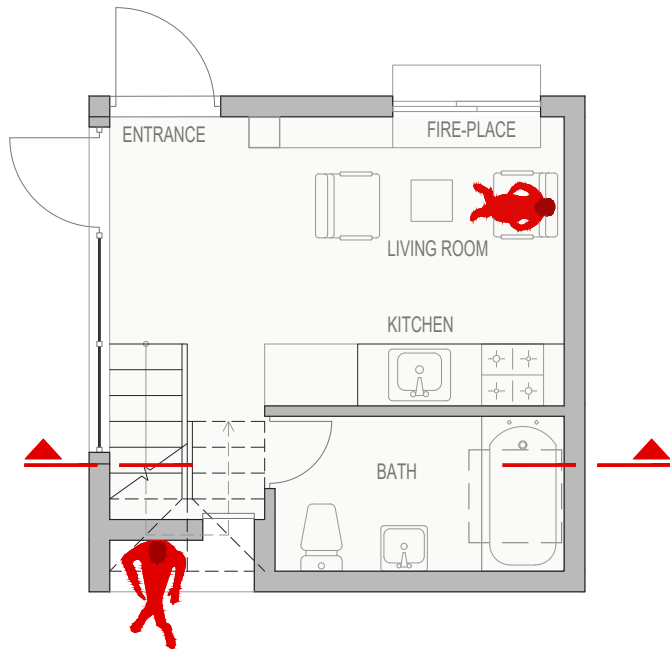
Villa Kooch

A mentionable noteworthy feature of this product is the possibility of creating various facades and spaces due to the product-oriented design approach of all building components. With this approach, each member of the building such as stairs, toilets and internal walls can be added in different places of the building in order to create new and unique spaces in each project. This approach will also be effective in the facade of the building, and by alternating the external walls and adding and subtracting modules, terraces with different areas and facades with different window areas can be achieved. Also, at the scale of the building, with different arrangements of several modules in a single plot, it is possible to create multiple spatial qualities.

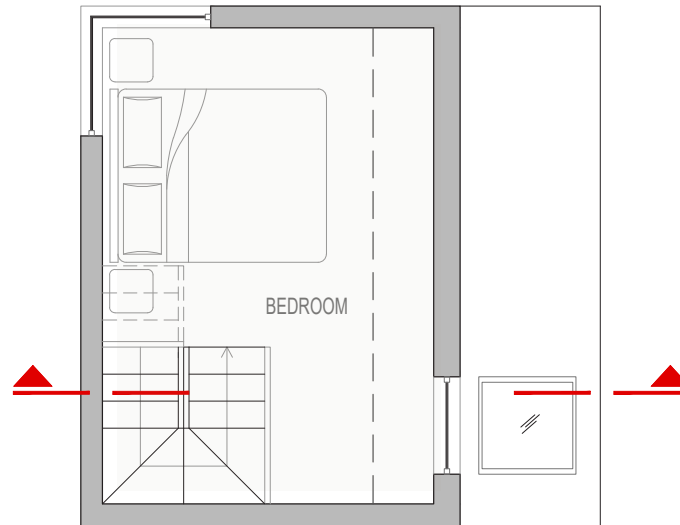


Villa Kooch

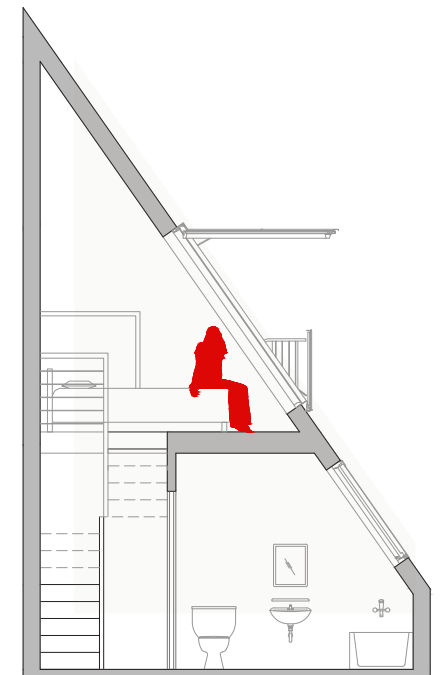
Architectural drawings demonstrating the alternative plan of single base unit (43 square meters) for Villa kooch



Ground Floor
25 square meters



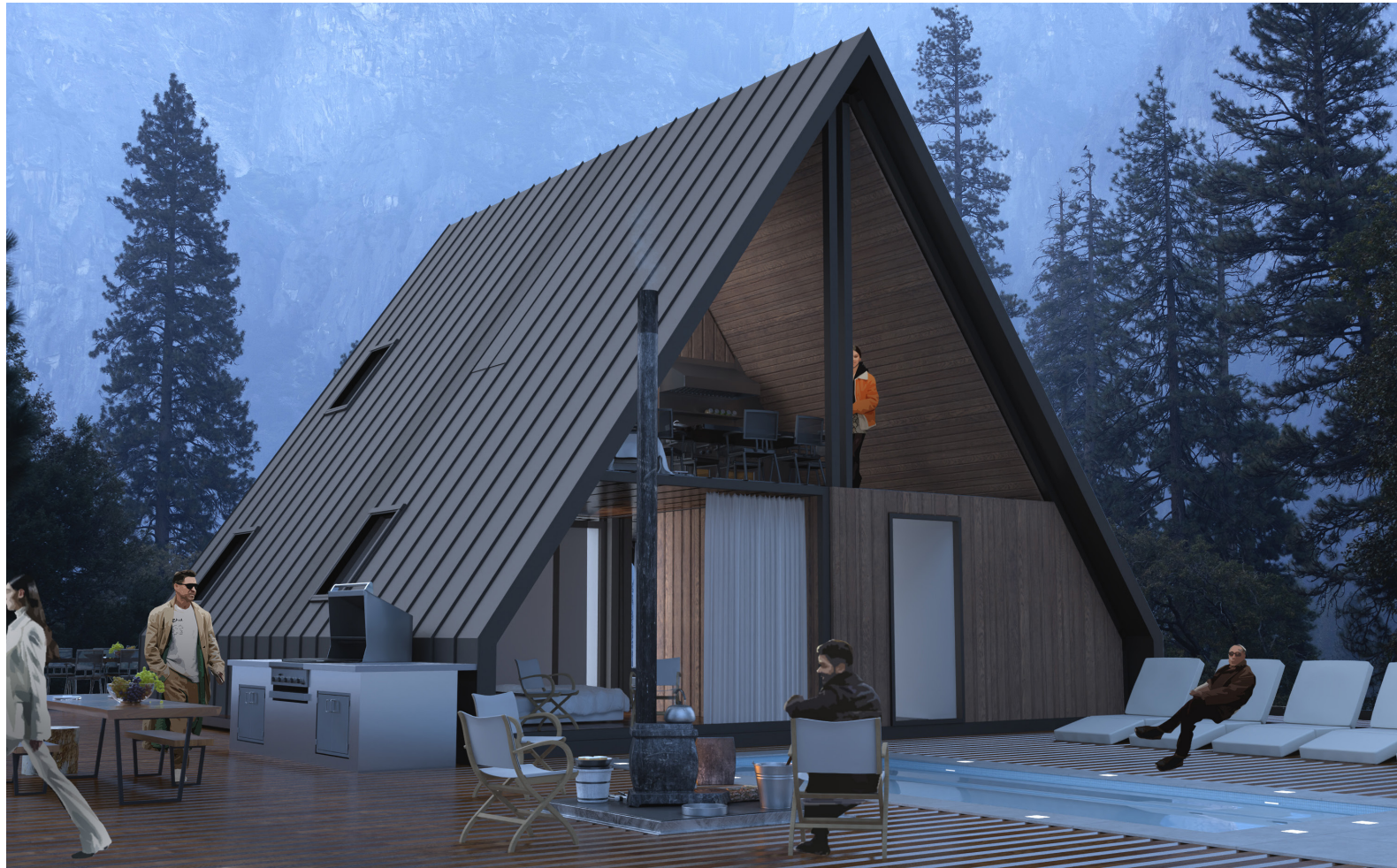
First Floor
18 square meters



Section A-A

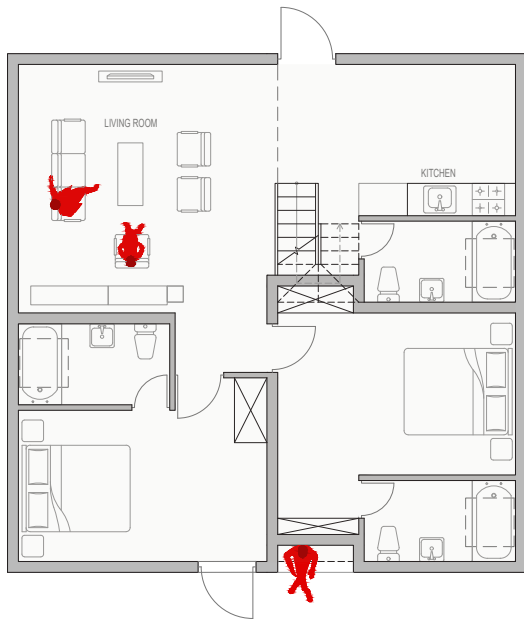
Villa Kooch

Exterior perspective of Villa Kooch, demonstration of four base units combining to a single habitat

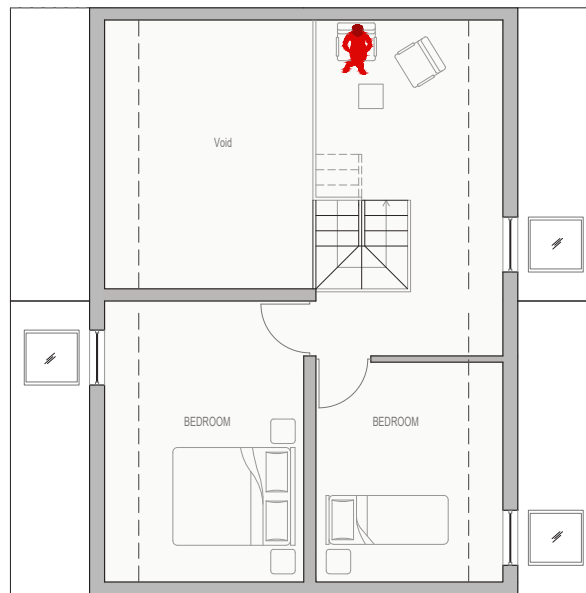


Villa Kooch

Architectural drawings demonstrating the alternative plan of four base units combining to provide uniform habitat



Ground Floor
100 square meters



First Floor
80 square meters



Section A-A

Villa Kooch

Exterior perspective demonstrating the alternative form of four base units combining to provide uniform habitat in a mountainous environment



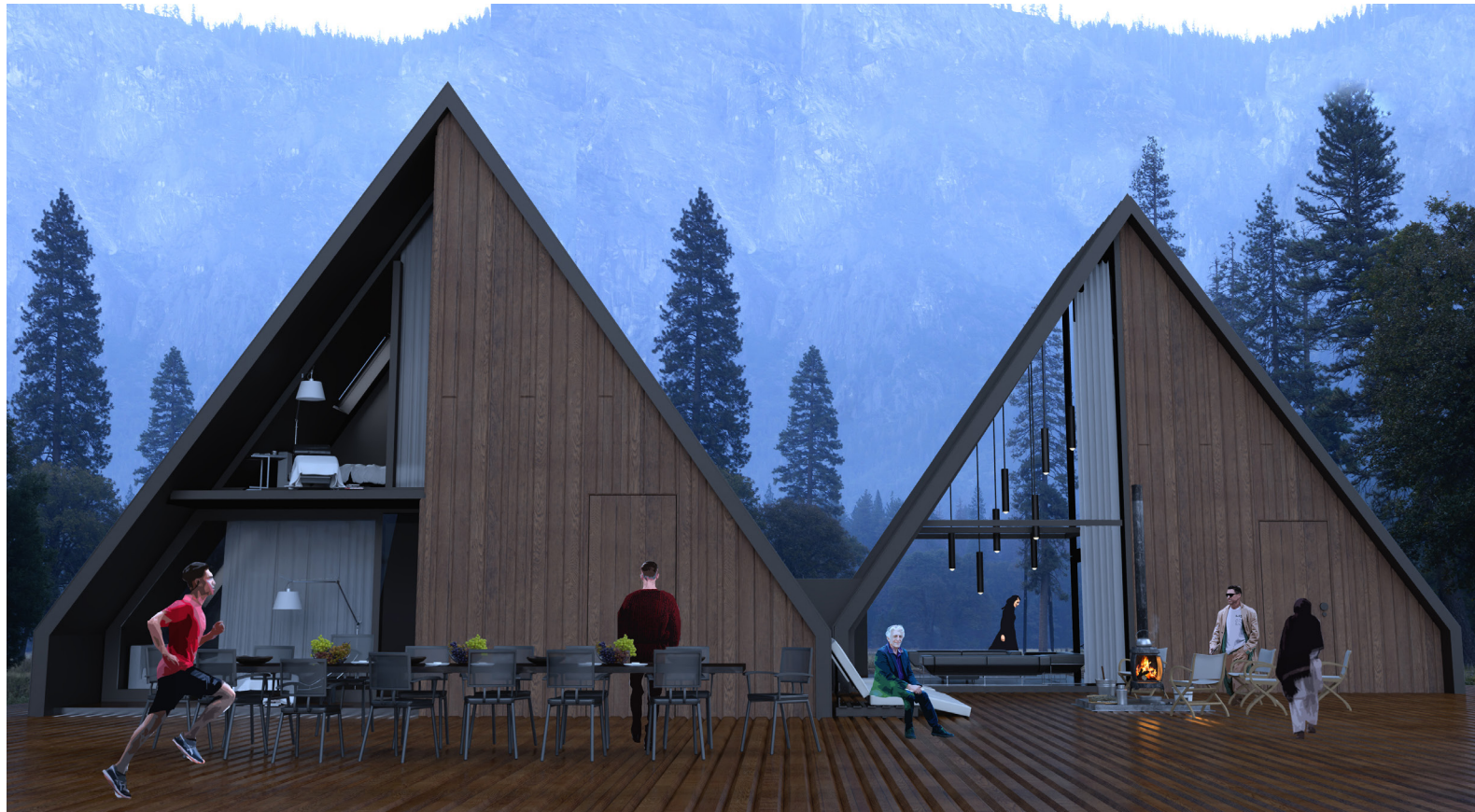
Villa Kooch

Interior perspective demonstrating the alternative dining room on second floor of uniform habitat including the combination of four base units



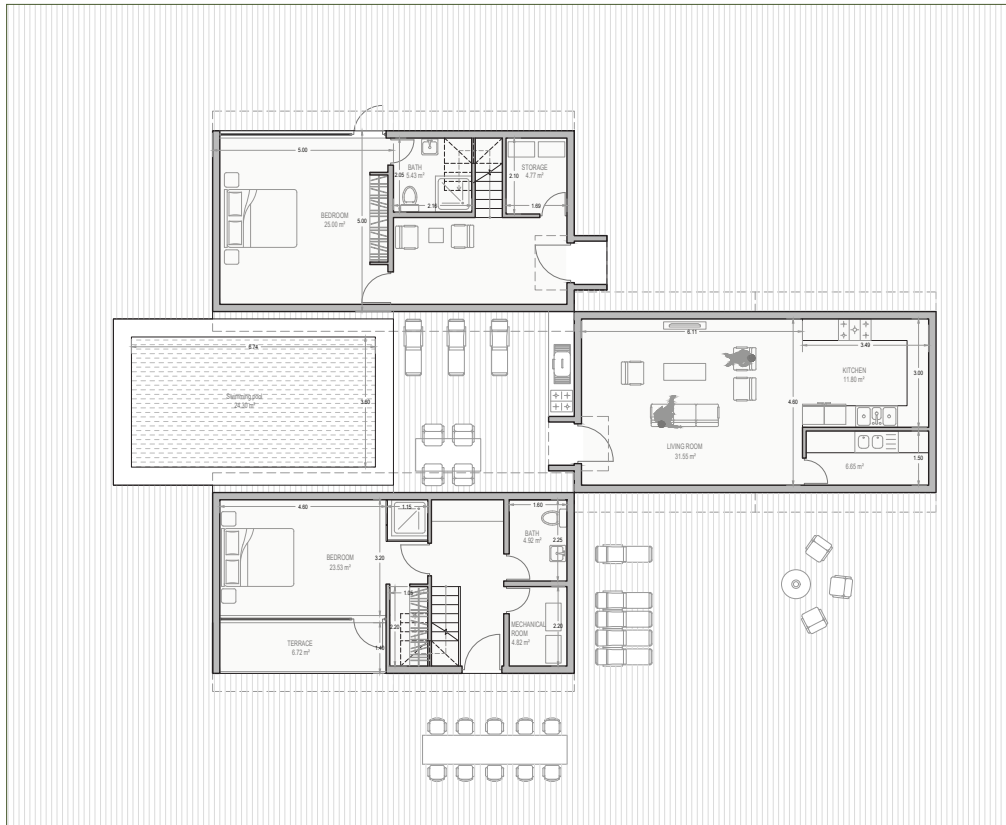
Villa Daal

Villa Daal is a unique combination of eighty square meter modules that provide a unified space inside. The way the units are placed relative to each other creates privacy in the middle spaces and makes these spaces suitable for programs instantiating, outdoor swimming pools, gathering spaces and other private functions. The relation between indoor and outdoor spaces in the middle space, is a quality that provides the possibility to communicate with nature in humid and mountainous climates, as well as to use light and other weather features as much as possible.

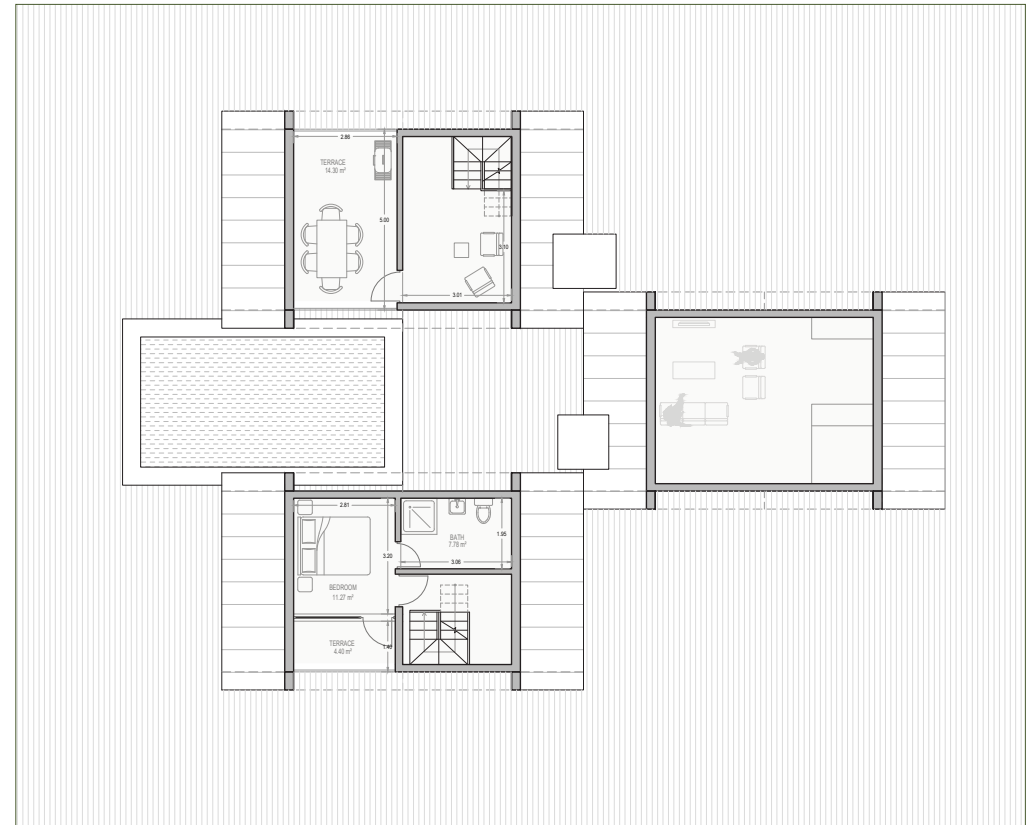


Villa Daal

Architectural drawings demonstrating the alternative plan of three base unit combination in order to achieve architectural quality within a single habitat of Villa Daal



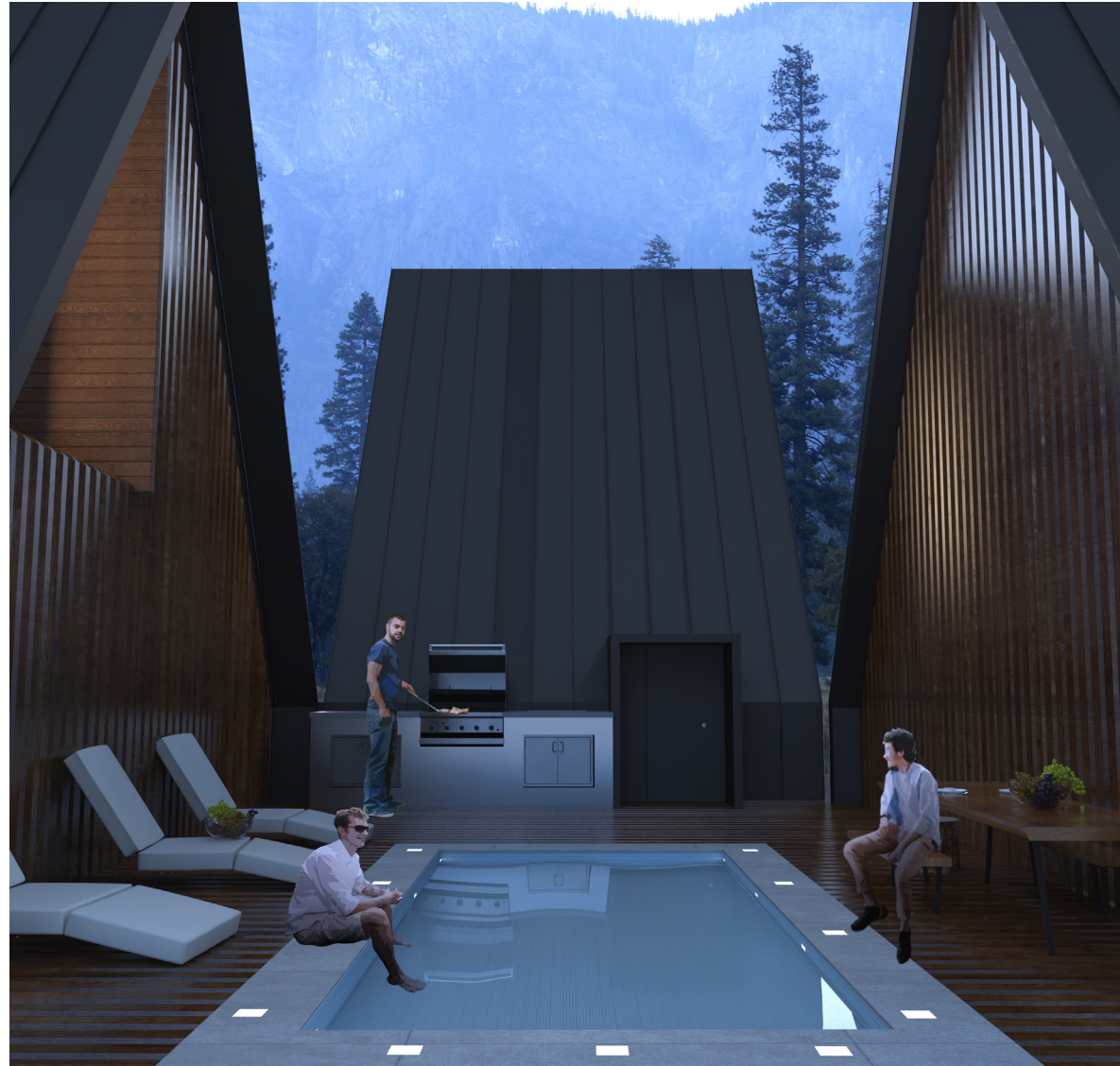
Ground Floor



First Floor

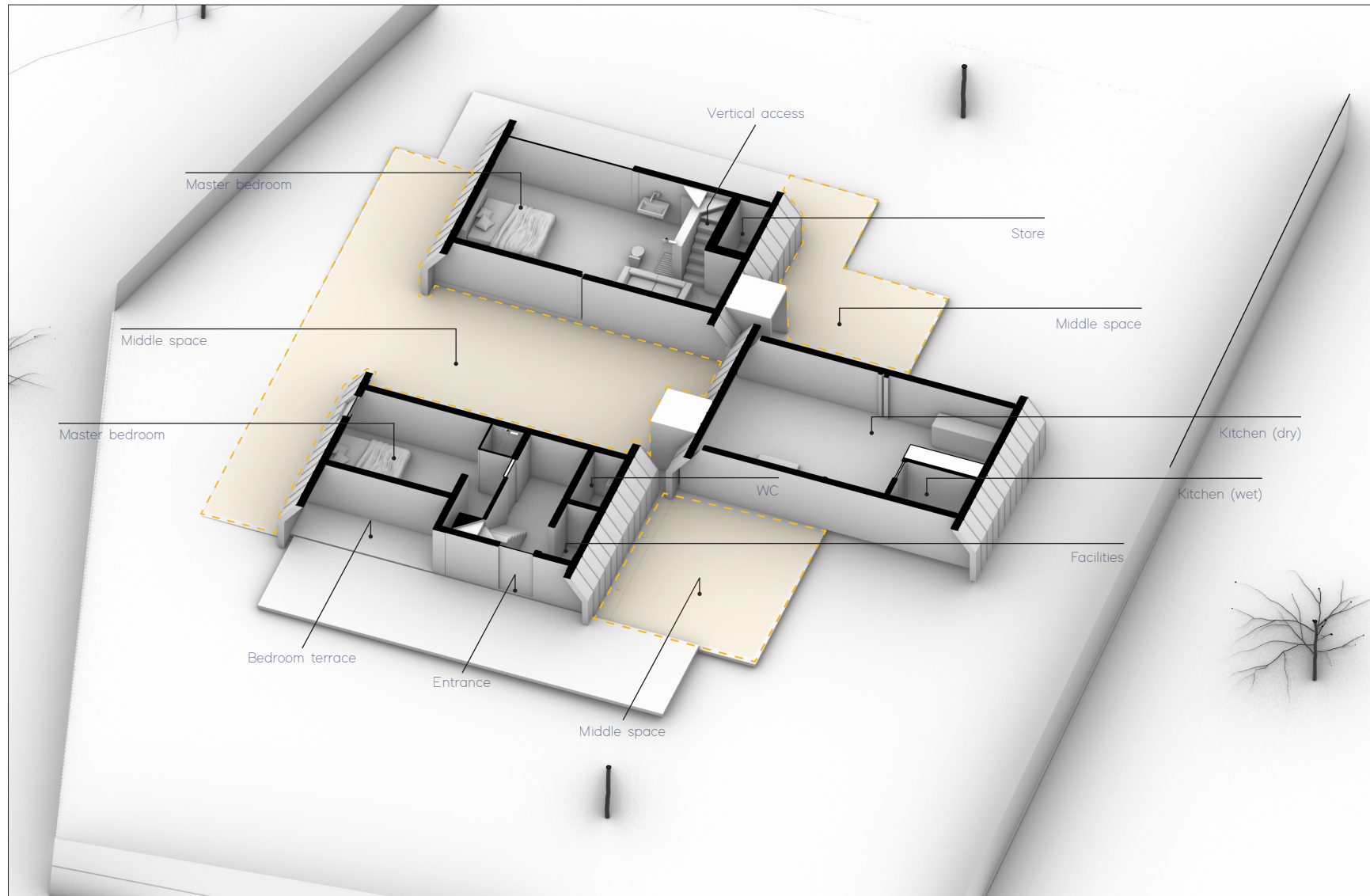
Villa Daal

One of the features of the Daal Villa product is the placement of service spaces in half of the plan and sleeping and living spaces in the other half, thus making half of the facade of the building transparent and the full and empty structure created on the facade adds to the visual quality of the complex.



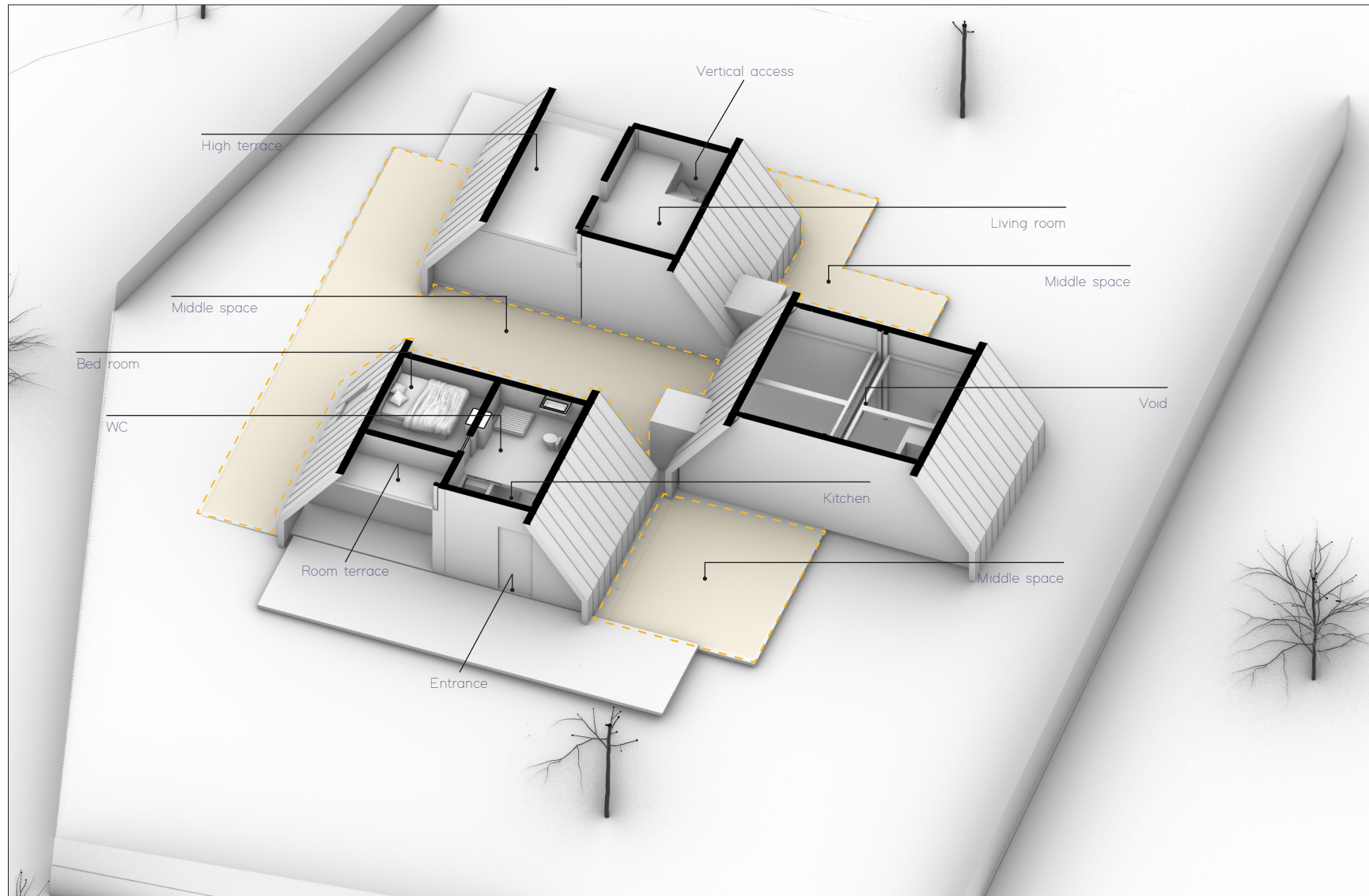
Villa Daal

Architectural diagram of the alternative ground floor plan of three base unit combination, in order to demonstrate the special relation and quality



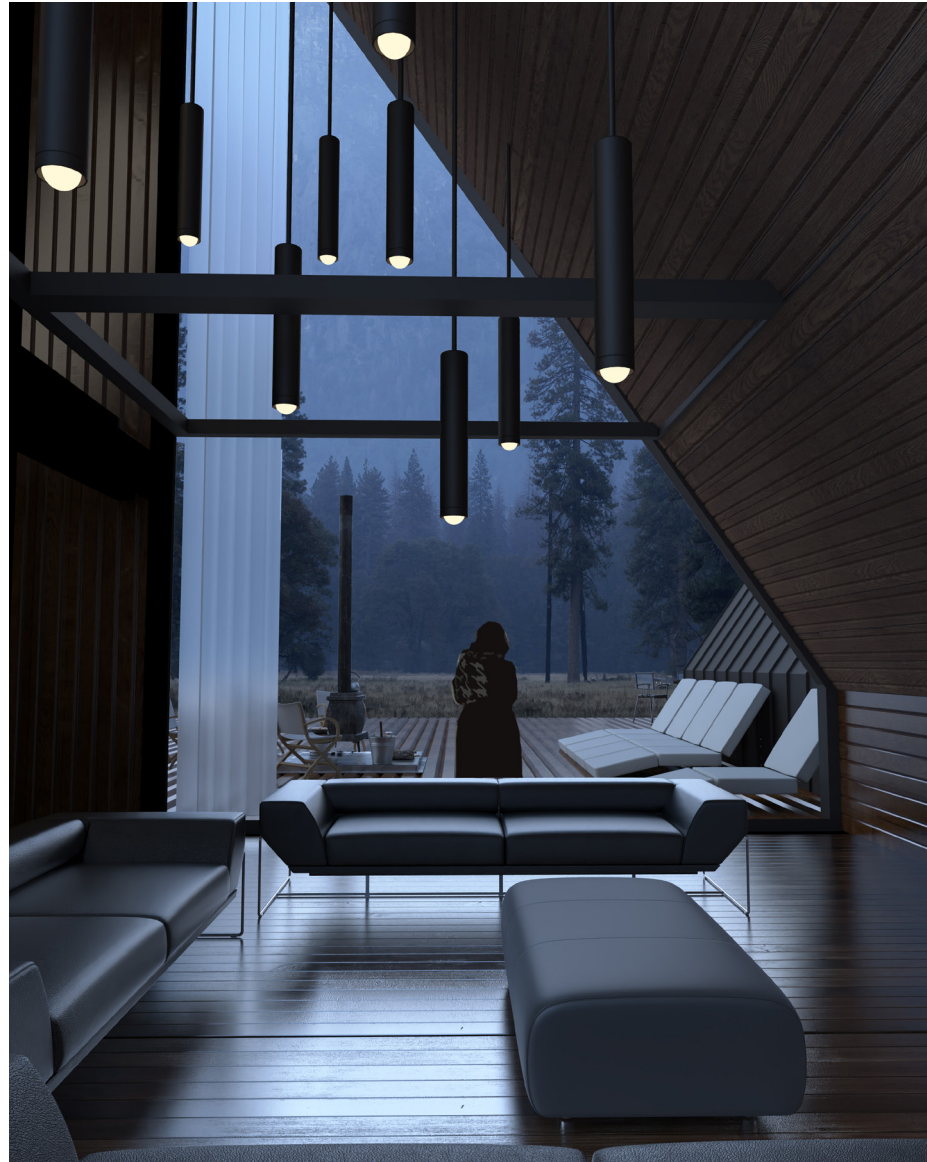
Villa Daal

Architectural diagram of the alternative first floor plan of three base unit combination, in order to demonstrate the special relation and quality



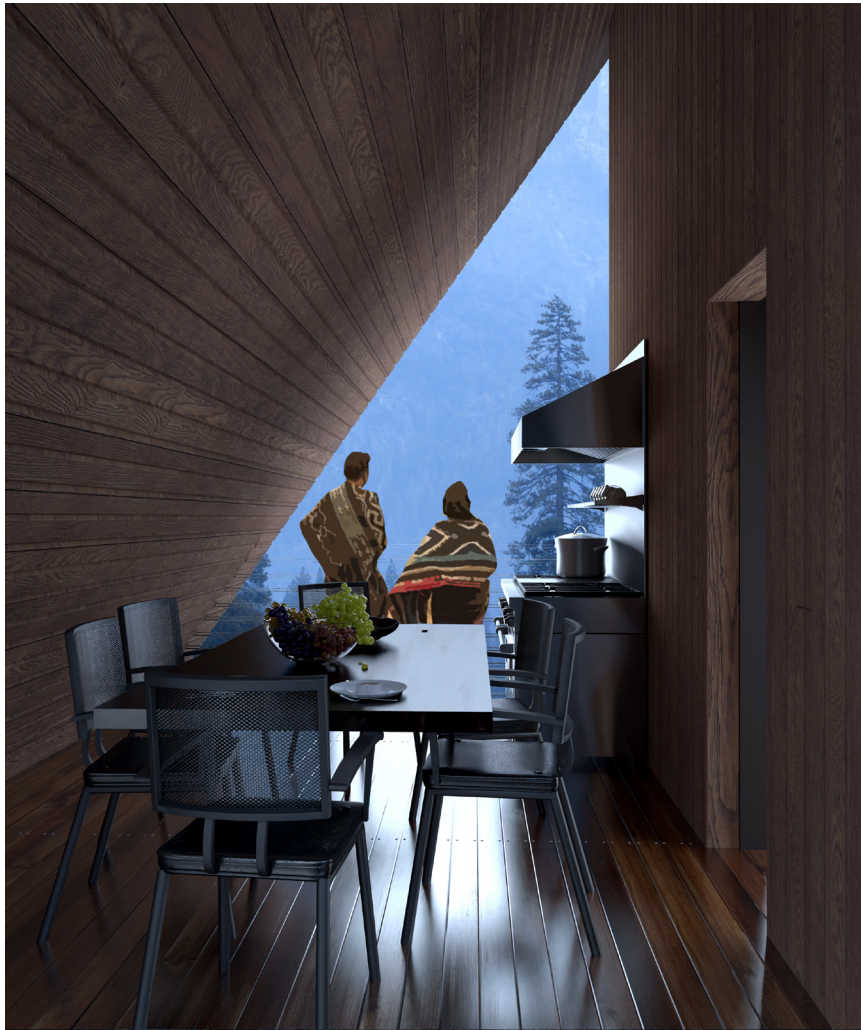
Villa Daal

The living space with a double height floor is one of the unique spaces that makes the indoor and outdoor spaces connected.



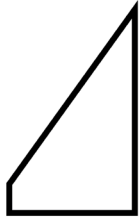
Villa Daal

This product is one of the lightweight structures and all its members are pre-engineered in the production factory and pre-assembled, transported to the installation site and installed in the minimum time possible. Taking advantage of this approach, along with maintaining the quality of the building, greatly reduces operational costs.



Pooch

"Pooch" product, as a subset of Mana side units, is designed and engineered with the aim of creating a cheap and light product to create a semi-open and covered space with different uses.



△ An Empty Space



△ Solid Space



Best For Expansion



Fast Installation



It Is Light Weight



Creates △
Rich Outdoor
Experience



Creates Privacy



Fits Every Things
That △ Vacation
Needs.



Creates More Space
For The Family

It's An Empty Space, fill it with what you need !



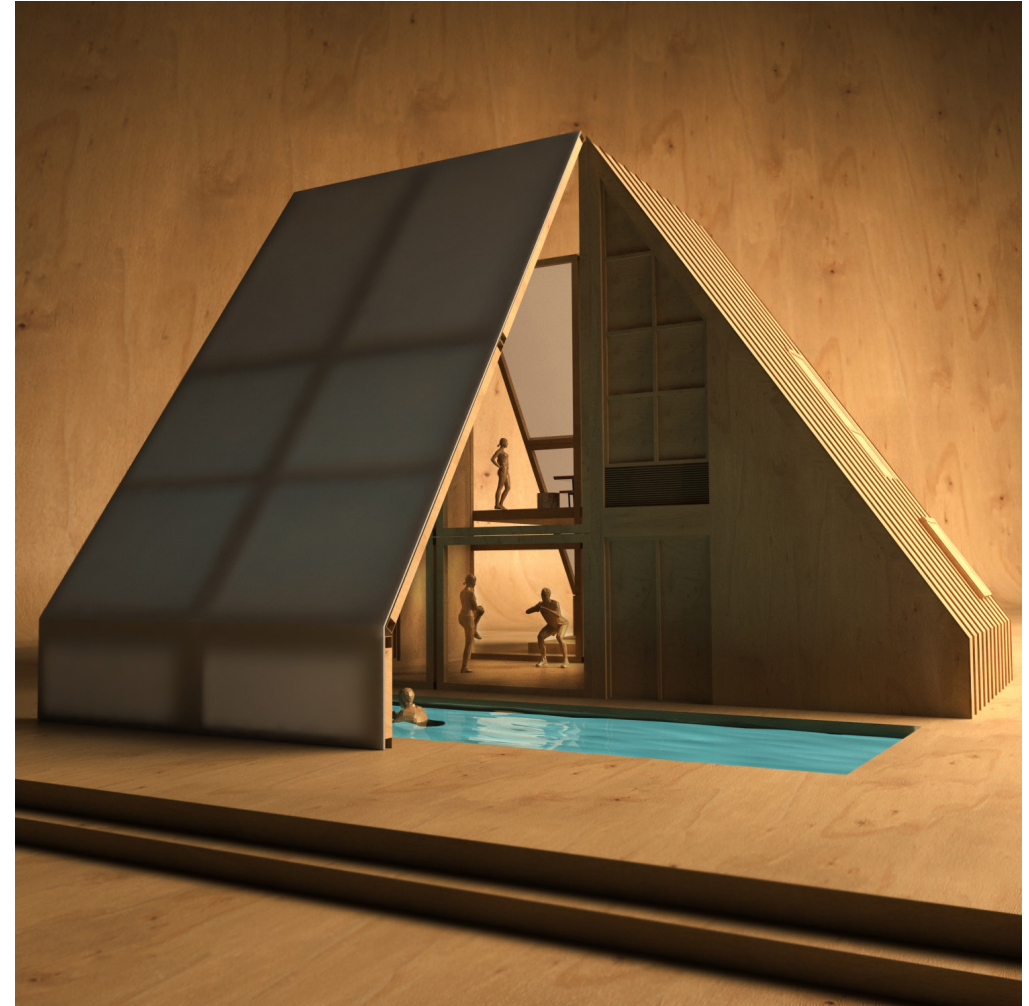
Pooch

In addition to its independent function, this product can be combined with other Mana products and create different spaces. This product is made of a light metal structure and fabric cover, which, in addition to providing privacy and protection against atmospheric factors, does not harm the user's interaction with nature.



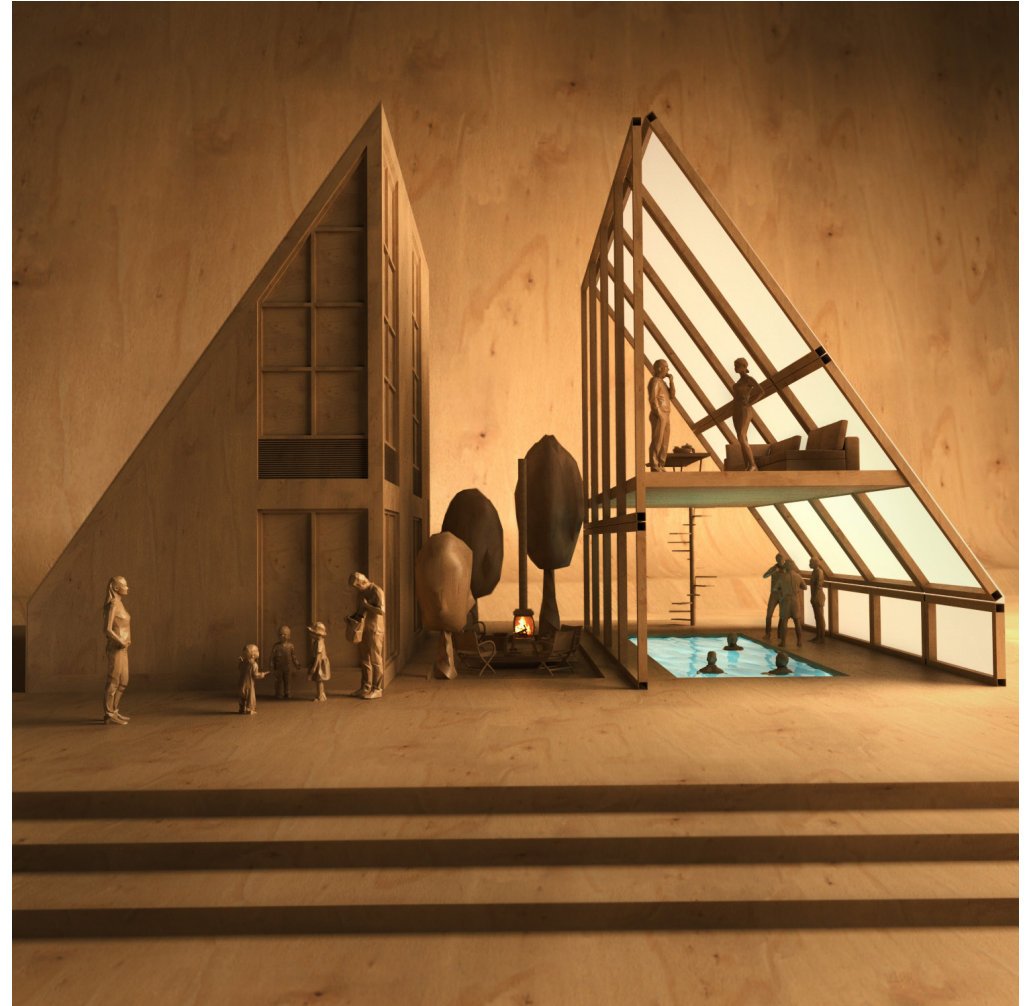
Pooch

Also, the ability to add a terrace at the level of the first floor makes "Pooch" suitable for enjoying the natural views as much as possible. Have \wedge Diffused Soft Light in Sunny Days and \wedge Silcencer Shield in Rainy Days. With \wedge Extra Terrace Have \wedge Richer Exterior Experience. Now Expansion Is Much More Faster And Much More Optimal.



Pooch

^ A Single Empty Space Can Be Attached To Your House In Order To Create More Private Spaces. Have ^ A Private Courtyard With ^ A Dialectic relationship between Translucency And Solidity. Modular Spaces That Create Non-Linear Spatial Qualities.





website
mana.archi

email
info@mana.archi

instagram
[manaarchi](https://www.instagram.com/manaarchi)

phone
+989127158696